



FACULTIES

OPEN AND DISTANCE EDUCATION

EDUCATION

DENTISTRY

PHARMACY

ARTS AND SCIENCES

FINE ARTS AND DESIGN

LAW

ECONOMICS AND ADMINISTRATIVE SCIENCES

THEOLOGY

COMMUNICATION

ARCHITECTURE

ENGINEERING

HEALTH SCIENCES

PERFORMING ARTS

MEDICINE

VETERINARY MEDICINE

NURSING

**Scholarship Opportunities
are Available!**

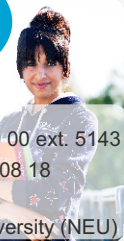
CONTACT US

Tel: +90 (392) 680 20 00 ext. 5143

Whatsapp: +90 548 818 08 18

Email: info@neu.edu.tr

Linkedin: Near East University (NEU)



WHY CHOOSE NEAR EAST UNIVERSITY

The Near East University, established in 1988, is located in Nicosia, capital of North Cyprus, and as an international higher education institution employing highly qualified staff, offers the most extensive undergraduate and postgraduate education opportunities to over 27 thousand students coming from over 102 countries. The Near East University has 19 faculties comprising 220 departments and programs, 5 graduate schools with around 200 graduate and postgraduate programs, and 4 high schools, 28 research institutes, and has several international memberships. The University is already a full member of the European University Association (EUA), International Association of Universities (IAU) within the body of UNESCO, International Society for Engineering Education (IGIP), Joint Commission International (JCI), the Federation of the Universities of the Islamic World (FUIW), 118 other national and international institutions and foundations, and moreover, many more membership applications related to various disciplines are already in progress.

HOW TO APPLY

General Requirements for Undergraduate Admissions

- * For Faculties of Dentistry, Engineering, Medicine & Pharmacy, General Certificate of Education (GCE) - A-level results from Maths, Physics, Biology or Chemistry)
- * International General Certificate of Secondary Education Examination (IGCSE)
- * American College Testing Examination (ACT)
- * Scholastic Aptitude Test Examination (SAT)
- * Tawjihi Examination (for students from Jordan and Palestine)
- * International Baccalaureate Examination
- * Baccalaureate Examination (for students from Lebanon, Iraq or Syria)
- * "Diploma Debirestan" (for students from Iran)
- * Higher Secondary Certificate Examination (for students from Pakistan, India and Bangladesh)
- * WAEC/NECO /NABTEB (for students from Nigeria)
- * General official High School Certificate (students from other countries)
- * GAOKAO Exam Results (for Chinese students)

Documents Required

- * Application Form
- * Original copy of the Diploma
- * A photocopy of the identity card or passport.
- * Reference letter from the school you last attended
- * For the transfer students copy of academic transcript and course description
- * Copy of English language qualification –if taken-
- * 2 passport sized photograph (to be on the application form).

** Note: English translations of these documents are necessary if they are in any foreign language. In order to complete the registration all the original documents must be submitted upon arrival.*

All the applicants can find the application forms and apply via;
- Our website (www.neu.edu.tr) & email it to info@neu.edu.tr
- Postal services (International Office, Near East Boulevard, Nicosia-TRNC)
- Fax (+90 392 680 2043)

Ph.D. Programs

Graduate School of Education Sciences

- Computer Education and Instructional Technology
- Computer Education and Instructional Technology*
- Educational Administration, Supervision, Planning and Economics
- Educational Administration, Supervision, Planning and Economics*
- Educational Programs and Instruction
- Educational Programs and Instruction*
- English Language Education
- Environmental Education
- Environmental Education*
- Folklore Education*
- Guidance and Psychological Counselling
- Guidance and Psychological Counselling*
- History Education*
- Music Education*
- Special Education
- Special Education*

Graduate School of Applied Sciences

- Architecture
- Architecture*
- Biomedical Engineering
- Computer Engineering
- Civil Engineering
- Computer Information Systems
- Electrical and Electronic Engineering
- Interior Architecture
- Landscape Architecture
- Landscape Architecture*
- Mathematics
- Mechanical Engineering

Graduate School of Health Sciences

Faculty of Dentistry

- Endodontics*
- Dento Maxillofacial Radiology*
- Oral & Maxillofacial Surgery*
- Orthodontics*
- Pedodontics*
- Periodontology*
- Prosthodontics*
- Restorative Dentistry*

Faculty of Pharmacy

- Analytical Chemistry
- Analytical Chemistry*
- Biochemistry
- Biochemistry*
- Clinical Pharmacy
- Clinical Pharmacy*
- Pharmacognosy
- Pharmacognosy*
- Pharmacology
- Pharmacology*
- Phytotherapy
- Phytotherapy*
- Pharmaceutical Botany
- Pharmaceutical Botany*
- Pharmaceutical Chemistry
- Pharmaceutical Chemistry*
- Pharmaceutical Technology
- Pharmaceutical Technology*
- Toxicology
- Toxicology*

Faculty of Medicine

- Allergy and Immunology
- Anatomy*
- Biostatistics
- Biostatistics*
- Histology & Embriology*
- Medical Biochemistry
- Medical Microbiology and Clinical Microbiology
- Medical Biology and Genetics
- Molecular Medicine
- Health Institutions Administration*
- Nutrition and Dietetics*
- Physiotherapy and Rehabilitation*

Faculty of Nursing

- Child Health and Pediatric Nursing*
- Fundamentals of Nursing and Nursing Administration*
- Internal Medicine Nursing*
- Mental Health and Psychiatric Nursing*
- Nursing
- Nursing*
- Obstetric and Gynecology Nursing*
- Public Health Nursing*
- Surgical Nursing*

Faculty of Veterinary Medicine

- Animal Nutrition and Nutritional Diseases
- Food Hygiene and Technology
- Gynecology & Obstetrics
- Veterinary Internal Medicine
- Veterinary Microbiology

School of Physical Education and Sports

- Physical Education and Sport*
- Art and Design*
- Banking and Finance
- Banking and Finance (AR)
- Business Administration
- Business Administration (AR)
- Clinical Psychology*
- Economics
- Economics (AR)
- General Psychology*
- Innovation and Knowledge Management
- Media and Communication Studies*
- Private Law*
- Political Science and International Relations
- Political Science and International Relations(AR)
- Public Law*
- Public Law (AR)

*** TURKISH LANGUAGE ONLY**

Masters Programs

Graduate School of Education Sciences

- Arts and Crafts Teaching*
- Computer Education and Instructional Technology
- Computer Education and Instructional Technology*
- Creative Drama in Education*
- Educational Administration, Supervision
- Educational Administration, Supervision*
- Educational Programs and Instruction
- Educational Programs and Instruction*
- English Language Teaching
- Environmental Education
- Environmental Education*
- Folklore Education*
- Geography Education*
- Guidance and Psychological Counselling
- Guidance and Psychological Counselling*
- History Education
- History Education*
- Human Resources Development in Education
- Human Resources Development in Education*
- Mathematic Education
- Mathematic Education*
- Measurement and Evaluation in Education*
- Music Education*
- Ottoman Palaeography and Archiving*
- Pre-school Teaching
- Science Teaching*
- Special Education
- Special Education*
- Turkish Education*

Graduate School of Criminal Sciences

- Criminal Chemistry and Toxicology*
- Criminal Psychology*

Graduate School of Applied Sciences

- Architecture
- Architecture*
- Biomedical Engineering
- Chemistry
- Civil Engineering
- Computer Engineering
- Computer Information Systems
- Construction Management
- Electrical and Electronic Engineering
- Electrical and Electronic Engineering (1 year)
- Food Engineering
- Information Systems Engineering
- Interior Architecture
- Landscape Architecture
- Landscape Architecture*
- Mathematics
- Mechanical Engineering
- Mechanical Engineering (1 year)
- Mechatronics Engineering
- Petroleum and Natural Gas Engineering
- Petroleum and Natural Gas Engineering (1 year)
- Software Engineering

Graduate School of Health Sciences

Faculty of Pharmacy

- Analytical Chemistry
- Analytical Chemistry*
- Biochemistry
- Biochemistry*
- Clinical Pharmacy
- Clinical Pharmacy*
- Pharmacognosy
- Pharmacognosy*
- Pharmacology
- Pharmacology*

- Phytotherapy
- Phytotherapy*
- Pharmaceutical Botany
- Pharmaceutical Botany*
- Pharmaceutical Chemistry
- Pharmaceutical Chemistry*
- Pharmaceutical Technology
- Pharmaceutical Technology*
- Toxicology
- Toxicology*
- Anatomy
- Anatomy*
- Biostatistics
- Biostatistics*
- Medical Biochemistry
- Medical Biotechnology*
- Histology & Embriology
- Medical Microbiology and Clinical Microbiology
- Medical Biology and Genetics
- Molecular Medicine
- Occupational Health and Safety*
- Physiology*

Faculty of Medicine

- Midwifery*
- Nutrition and Dietetics*
- Physical Therapy and Rehabilitation*

Faculty of Nursing

- Child Health and Pediatric Nursing*
- Fundamentals of Nursing and Nursing Administration*
- Internal Medicine Nursing*
- Mental Health and Psychiatric Nursing*
- Nursing
- Nursing*
- Obstetric and Gynecology Nursing*
- Public Health Nursing*
- Surgical Nursing*

Faculty of Veterinary Medicine

- Obstetrics and Gynaecology

School of Physical Education and Sports

- Physical Education and Sport*

Graduate School of Social Sciences

- Arabic Language and Rhetoric
- Banking and Finance
- Banking and Finance (AR)
- Banking and Finance (KSA)
- Banking and Accounting
- Business Administration
- Business Administration (AR)
- Business Administration (KSA)
- Clinical Psychology*
- Dramaturgy*
- Economics
- Economics (AR)
- English Language and Literature
- European Union Relations
- European Union Relations (AR)
- Fine Arts and Design *
- General Psychology
- General Psychology (AR)
- Human Resource Management*
- Innovation and Knowledge Management
- International Business
- International Law
- International Law (AR)
- International Relations
- International Relations(AR)
- Maritime Law*
- Marketing
- Media and Communication Studies*
- Private Law*
- Private Law (AR)
- Public Law*
- Public Law (AR)
- Political Science
- Security Studies*
- Security Studies (AR)
- Tourism and Hotel Management
- Turkish Language and Literature*

***: Turkish Language**

KSA: Kingdom of Saudi Arabia.

AR: Arabic Language

